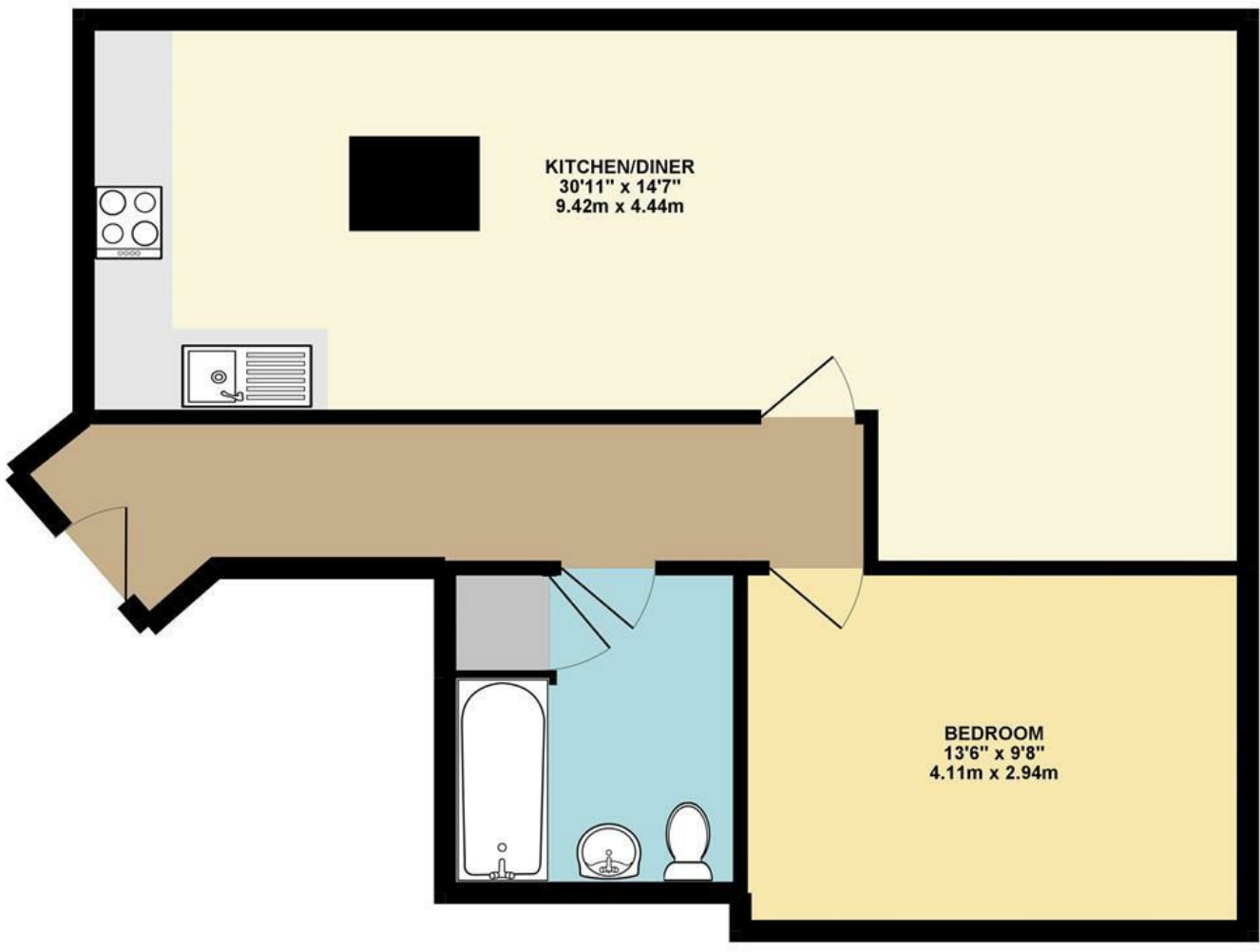




Paper Mill Yard | Norwich | NR1
Offers In Excess Of £140,000



GROUND FLOOR 653.71 sq. ft.
(60.73 sq. m.)



Energy Efficiency Rating		Current	Potential
Very energy efficient - lower running costs			
(92 plus) A			
(81-91) B		81	84
(69-80) C			
(55-68) D			
(39-54) E			
(21-38) F			
(1-20) G			
Not energy efficient - higher running costs			
England & Wales		EU Directive 2002/91/EC	

Disclaimer – In accordance with the Property Misdescriptions Act, the company gives notice that all descriptions, references to condition, necessary permissions for use and other details are given in good faith and believed to be correct, but any intending lessees do not rely on them as statements of fact, but must satisfy themselves by inspection or other means, as to their accuracy.

TOTAL FLOOR AREA : 653.71 sq. ft. (60.73 sq. m.) approx.
Whilst every attempt has been made to ensure the accuracy of the floorplan contained here, measurements of doors, windows, rooms and any other items are approximate and no responsibility is taken for any error, omission or mis-statement. This plan is for illustrative purposes only and should be used as such by any prospective purchaser. The services, systems and appliances shown have not been tested and no guarantee as to their operability or efficiency can be given.
Made with Metropix ©2019

City Centre apartment boasting open plan living accommodation and no onward chain. Situated in the popular City Centre development of "Paper Mill Yard" this apartment offers accommodation featuring one double bedroom, bathroom and generous open plan kitchen/living room.

The centre of Norwich boasts two modern shopping malls, a bustling market place and boutique shopping in the numerous lanes and cobbled streets with the two magnificent cathedrals and dominant castle providing a wealth of history dating back to the Norman times. The property also benefits from being close to Norwich Train Station with its regular links to Cambridge and London.

The historic City Centre of Norwich is a vibrant place to live. Offering an exciting nightlife and a variety of amenities such as; shops, cafes, restaurants, two popular shopping malls, recreational areas, public houses, a busy market place, doctor and dental surgeries, beauty salons and boutique shopping in the numerous lanes and cobbled streets with the two magnificent cathedrals and dominant castle providing a wealth of history dating back to the Norman times. All levels of schools are within walking distance including private, college and university level education. Travelling is a breeze through the many transport links Norwich has to offer, including trains to London Liverpool Street, Cambridge, Nottingham and the beautiful Norfolk Coast Line. A variety of bus routes makes travelling to all areas outside of the City easy and convenient for all and the popular Norwich Car Club offers an alternative to public transport giving even more freedom of travel to Norwich's residents. To the north of the City is the Norwich International Airport providing transportation to a variety of destinations outside of the UK.

